

# Pilot and Signaling Devices

## Heavy-Duty 30.5 mm Watertight/Oiltight Push Buttons

### CR104P

## Section 9

Standard  
 Non-Illuminated  
 600 Volts Maximum AC/DC  
 10 Amperes Continuous

#### Common Forms

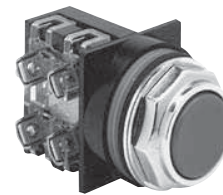
One-step selection and pricing of common assembled forms.

Units are supplied factory-assembled when ordered with contact blocks.

Suitable for use in NEMA Type 1, 3, 3R, 4, 4X, 12, and 13 applications when mounted in enclosures rated for those same applications. For some NEMA Type 4X applications, protective caps will improve corrosion resistance.

#### Flush Button - Momentary Operator

Contact Configuration	Color	Product Number	List Price GO-10P1
None (Operator Only)	Black	CR104PBG00B1	\$16.20
None (Operator Only)	Red	CR104PBG00R1	\$16.20
None (Operator Only)	Green	CR104PBG00G1	\$16.20
None (Operator Only)	1 Each: Red, Green, Yellow, Black	CR104PBG00U1 <sup>1</sup>	\$16.20
None (Operator Only)	1 Each: Brown, Blue, Orange, White	CR104PBG00V1 <sup>1</sup>	\$16.20
None (Operator Only)	Other	CR104PBG00*1 <sup>2</sup>	\$15.90
1NO-1NC	Black	CR104PBG91B1	\$34.20
1NO-1NC	Red	CR104PBG91R1	\$34.20
1NO-1NC	Green	CR104PBG91G1	\$34.20
1NO-1NC	1 Each: Red, Green, Yellow, Black	CR104PBG91U1 <sup>1</sup>	\$34.20
1NO-1NC	1 Each: Brown, Blue, Orange, White	CR104PBG91V1 <sup>1</sup>	\$34.20
1NO-1NC	Other	CR104PBG91*1 <sup>2</sup>	\$33.90
2NO-2NC	Black	CR104PBG92B1	\$52.20
2NO-2NC	Red	CR104PBG92R1	\$52.20
2NO-2NC	Green	CR104PBG92G1	\$52.20
2NO-2NC	1 Each: Red, Green, Yellow, Black	CR104PBG92U1 <sup>1</sup>	\$52.20
2NO-2NC	1 Each: Brown, Blue, Orange, White	CR104PBG92V1 <sup>1</sup>	\$52.20
2NO-2NC	Other	CR104PBG92*1 <sup>2</sup>	\$51.90
1NO	Black	CR104PBG10B1	\$25.20
1NO	Red	CR104PBG10R1	\$25.20
1NO	Green	CR104PBG10G1	\$25.20
1NO	1 Each: Red, Green, Yellow, Black	CR104PBG10U1 <sup>1</sup>	\$25.20
1NO	1 Each: Brown, Blue, Orange, White	CR104PBG10V1 <sup>1</sup>	\$25.20
1NO	Other	CR104PBG10*1 <sup>2</sup>	\$24.90
1NC	Black	CR104PBG01B1	\$25.20
1NC	Red	CR104PBG01R1	\$25.20
1NC	Green	CR104PBG01G1	\$25.20
1NC	1 Each: Red, Green, Yellow, Black	CR104PBG01U1 <sup>1</sup>	\$25.20
1NC	1 Each: Brown, Blue, Orange, White	CR104PBG01V1 <sup>1</sup>	\$25.20
1NC	Other	CR104PBG01*1 <sup>2</sup>	\$24.90



Flush Button

<sup>1</sup>Supplied with 4 caps: Unassembled.

<sup>2</sup>To order assembled units with a different color, substitute the letter below in place of the \* in product number and add required adder to the list price.

#### Cap Colors Available\*

Color	Insert in place of asterisk (*)	List Price Adder, GO-10P1 Push Buttons
Yellow	E	\$0.30
Blue	L	\$0.30
Orange	M	\$0.30
Brown	N	\$0.30
White	W	\$0.30
No Cap	A	\$0.00



# Pilot and Signaling Devices

## Heavy-Duty 30.5 mm Watertight/Oiltight Push Buttons

## Section 9

### CR104P

Standard

Non-Illuminated

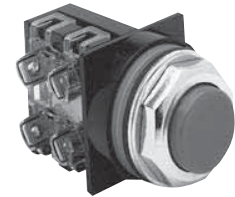
600 Volts Maximum AC/DC

10 Amperes Continuous

Suitable for use in NEMA Type 1, 3, 3R, 4, 4X, 12, and 13 applications when mounted in enclosures rated for those same applications. For some NEMA Type 4X applications, protective caps will improve corrosion resistance.

#### Extended Button - Momentary Operator

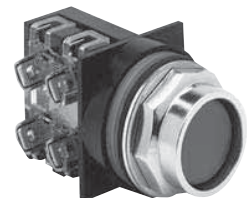
Contact Configuration	Color	Product Number	List Price GO-10P1
None (Operator Only)	Black	CR104PBG00B2	\$16.20
None (Operator Only)	Red	CR104PBG00R2	\$16.20
None (Operator Only)	Green	CR104PBG00G2	\$16.20
None (Operator Only)	1 Each: Red, Green, Yellow, Black	CR104PBG00U2 <sup>1</sup>	\$16.20
None (Operator Only)	1 Each: Brown, Blue, Orange, White	CR104PBG00V2 <sup>1</sup>	\$16.20
None (Operator Only)	Other	CR104PBG00*2 <sup>2</sup>	\$15.90
1NO-1NC	Black	CR104PBG91B2	\$34.20
1NO-1NC	Red	CR104PBG91R2	\$34.20
1NO-1NC	Green	CR104PBG91G2	\$34.20
1NO-1NC	1 Each: Red, Green, Yellow, Black	CR104PBG91U2 <sup>1</sup>	\$34.20
1NO-1NC	1 Each: Brown, Blue, Orange, White	CR104PBG91V2 <sup>1</sup>	\$34.20
1NO-1NC	Other	CR104PBG91*2 <sup>2</sup>	\$33.90
2NO-2NC	Black	CR104PBG92B2	\$52.20
2NO-2NC	Red	CR104PBG92R2	\$52.20
2NO-2NC	Green	CR104PBG92G2	\$52.20
2NO-2NC	1 Each: Red, Green, Yellow, Black	CR104PBG92U2 <sup>1</sup>	\$52.20
2NO-2NC	1 Each: Brown, Blue, Orange, White	CR104PBG92V2 <sup>1</sup>	\$52.20
2NO-2NC	Other	CR104PBG92*2 <sup>2</sup>	\$51.90
1NO	Black	CR104PBG10B2	\$25.20
1NO	Red	CR104PBG10R2	\$25.20
1NO	Green	CR104PBG10G2	\$25.20
1NO	1 Each: Red, Green, Yellow, Black	CR104PBG10U2 <sup>1</sup>	\$25.20
1NO	1 Each: Brown, Blue, Orange, White	CR104PBG10V2 <sup>1</sup>	\$25.20
1NO	Other	CR104PBG10*2 <sup>2</sup>	\$24.90
1NC	Black	CR104PBG01B2	\$25.20
1NC	Red	CR104PBG01R2	\$25.20
1NC	Green	CR104PBG01G2	\$25.20
1NC	1 Each: Red, Green, Yellow, Black	CR104PBG01U2 <sup>1</sup>	\$25.20
1NC	1 Each: Brown, Blue, Orange, White	CR104PBG01V2 <sup>1</sup>	\$25.20
1NC	Other	CR104PBG01*2 <sup>2</sup>	\$24.90



Extended Button

#### Recessed Button - Momentary Operator

Contact Configuration	Color	Product Number	List Price GO-10P1
None (Operator Only)	Black	CR104PBG00B3	\$16.20
None (Operator Only)	Red	CR104PBG00R3	\$16.20
None (Operator Only)	Green	CR104PBG00G3	\$16.20
None (Operator Only)	1 Each: Red, Green, Yellow, Black	CR104PBG00U3 <sup>1</sup>	\$16.20
None (Operator Only)	1 Each: Brown, Blue, Orange, White	CR104PBG00V3 <sup>1</sup>	\$16.20
None (Operator Only)	Other	CR104PBG00*3 <sup>2</sup>	\$15.90
1NO-1NC	Black	CR104PBG91B3	\$34.20
1NO-1NC	Red	CR104PBG91R3	\$34.20
1NO-1NC	Green	CR104PBG91G3	\$34.20
1NO-1NC	1 Each: Red, Green, Yellow, Black	CR104PBG91U3 <sup>1</sup>	\$34.20
1NO-1NC	1 Each: Brown, Blue, Orange, White	CR104PBG91V3 <sup>1</sup>	\$34.20
1NO-1NC	Other	CR104PBG91*3 <sup>2</sup>	\$33.90
2NO-2NC	Black	CR104PBG92B3	\$52.20
2NO-2NC	Red	CR104PBG92R3	\$52.20
2NO-2NC	Green	CR104PBG92G3	\$52.20
2NO-2NC	1 Each: Red, Green, Yellow, Black	CR104PBG92U3 <sup>1</sup>	\$52.20
2NO-2NC	1 Each: Brown, Blue, Orange, White	CR104PBG92V3 <sup>1</sup>	\$52.20
2NO-2NC	Other	CR104PBG92*3 <sup>2</sup>	\$51.90
1NO	Black	CR104PBG10B3	\$25.20
1NO	Red	CR104PBG10R3	\$25.20
1NO	Green	CR104PBG10G3	\$25.20
1NO	1 Each: Red, Green, Yellow, Black	CR104PBG10U3 <sup>1</sup>	\$25.20
1NO	1 Each: Brown, Blue, Orange, White	CR104PBG10V3 <sup>1</sup>	\$25.20
1NO	Other	CR104PBG10*3 <sup>2</sup>	\$24.90
1NC	Black	CR104PBG01B3	\$25.20
1NC	Red	CR104PBG01R3	\$25.20
1NC	Green	CR104PBG01G3	\$25.20
1NC	1 Each: Red, Green, Yellow, Black	CR104PBG01U3 <sup>1</sup>	\$25.20
1NC	1 Each: Brown, Blue, Orange, White	CR104PBG01V3 <sup>1</sup>	\$25.20
1NC	Other	CR104PBG01*3 <sup>2</sup>	\$24.90



Recessed Button

<sup>1</sup>Supplied with 4 caps: Unassembled.

<sup>2</sup>To order assembled units with a different color, substitute the letter below in place of the \* in product number and add required adder to the list price.

#### Cap Colors Available\*

Color	Insert in place of asterisk (*)	List Price Adder, GO-10P1 Push Buttons
Yellow	E	\$0.30
Blue	L	\$0.30
Orange	M	\$0.30
Brown	N	\$0.30
White	W	\$0.30
No Cap	A	\$0.00



# Pilot and Signaling Devices

## Heavy-Duty 30.5 mm Watertight/Oiltight Push Buttons

### CR104P

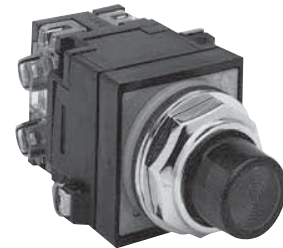
## Section 9

Standard  
Illuminated  
600 Volts Maximum AC/DC  
10 Amperes Continuous

Suitable for use in NEMA Types 1, 3, 3R, 4, 4X, 12, and 13 applications when mounted in enclosures rated for those same applications. For some NEMA Type 4X applications, protective caps will improve corrosion resistance.

#### Extended Button without Guard - Momentary Operator

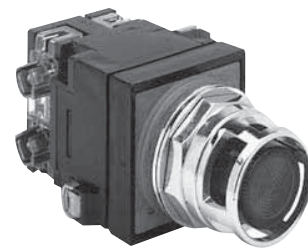
Power Supply Type	Supply Voltage	Lamp Type <sup>1</sup>	Contact Configuration	Product Number <sup>2</sup>	List Price GO-10P1
Transformer	120V 50/60 Hz	Incand., 6V, #755	1NO-1NC	CR104PBT11*1S2	\$82.20
Transformer	240V 50/60 Hz	Incand., 6V, #755	1NO-1NC	CR104PBT11*1S3	\$82.20
Transformer	480V 50/60 Hz	Incand., 6V, #755	1NO-1NC	CR104PBT11*1S4	\$82.20
Transformer	600V 50/60 Hz	Incand., 6V, #755	1NO-1NC	CR104PBT11*1S5	\$82.20
Full Voltage	6V 50/60 Hz	Incand., 6V, #755	1NO-1NC	CR104PBL11*1S6	\$70.20
Full Voltage	12V 50/60 Hz	Incand., 12V, #756	1NO-1NC	CR104PBL11*1S7	\$70.20
Full Voltage	24V 50/60 Hz	Incand., 24V, #1819	1NO-1NC	CR104PBL11*1S8	\$70.20
Full Voltage	120V 50/60 Hz	Incand., 130V	1NO-1NC	CR104PBL11*1S2	\$70.20
Dual Input <sup>3</sup>	120V Dual Input	Incand., 130V	1NO-1NC	CR104PBL91*1H2	\$100.20
Full Voltage	6 VAC/DC	LED, 6V	1NO-1NC	CR104PBL11*1L6	\$88.20
Full Voltage	12 VAC/DC	LED, 12V	1NO-1NC	CR104PBL11*1L7	\$88.20
Full Voltage	24 VAC/DC	LED, 24V	1NO-1NC	CR104PBL11*1L8	\$88.20
Full Voltage	120 VAC/DC	LED, 120V	1NO-1NC	CR104PBL11*1L2	\$88.20



Extended without Guard

#### Extended Button with Guard - Momentary Operator

Power Supply Type	Supply Voltage	Lamp Type <sup>1</sup>	Contact Configuration	Product Number <sup>2</sup>	List Price GO-10P1
Transformer	120V 50/60 Hz	Incand., 6V, #755	1NO-1NC	CR104PBT11*3S2	\$88.20
Transformer	240V 50/60 Hz	Incand., 6V, #755	1NO-1NC	CR104PBT11*3S3	\$88.20
Transformer	480V 50/60 Hz	Incand., 6V, #755	1NO-1NC	CR104PBT11*3S4	\$88.20
Transformer	600V 50/60 Hz	Incand., 6V, #755	1NO-1NC	CR104PBT11*3S5	\$88.20
Full Voltage	6V 50/60 Hz	Incand., 6V, #755	1NO-1NC	CR104PBL11*3S6	\$76.20
Full Voltage	12V 50/60 Hz	Incand., 12V, #756	1NO-1NC	CR104PBL11*3S7	\$76.20
Full Voltage	24V 50/60 Hz	Incand., 24V, #1819	1NO-1NC	CR104PBL11*3S8	\$76.20
Full Voltage	120V 50/60 Hz	Incand., 130V	1NO-1NC	CR104PBL11*3S2	\$76.20
Dual Input <sup>3</sup>	120V Dual Input	Incand., 130V	1NO-1NC	CR104PBL11*3H2	\$106.20
Full Voltage	6 VAC/DC	LED, 6 V	1NO-1NC	CR104PBL11*3L6	\$94.20
Full Voltage	12 VAC/DC	LED, 12 V	1NO-1NC	CR104PBL11*3L7	\$94.20
Full Voltage	24 VAC/DC	LED, 24 V	1NO-1NC	CR104PBL11*3L8	\$94.20
Full Voltage	120 VAC/DC	LED, 120 V	1NO-1NC	CR104PBL11*3L2	\$94.20



Extended with Guard

<sup>1</sup>All lamps miniature bayonet bases.

<sup>2</sup>Replace asterisk (\*) in product number with letter from chart below.

<sup>3</sup>See page 9-3 for dual input wiring diagram.

#### Push-Push Maintained Operator

The push-push operated units are 2-position, maintained contact push buttons. They are assembled, ready for installation, except for the required nameplate which must be ordered as a separate item. Two single-circuit contact blocks are the maximum number that can be installed on the operator. All normally open contacts must be the early closing type.

Power Supply Type	Voltage (60/50 Hz)	Lamp Type <sup>1</sup>	Contact Configuration <sup>3</sup>	Color	Product Number <sup>4</sup>	List Price GO-10P1
Transformer	120 V	Incand., 6V, #755	1NC-1NO	Red	CR104PBT11R1B2	\$100.20
Transformer	120 V	Incand., 6V, #755	1NC-1NO	Green	CR104PBT11G1B2	\$100.20
Transformer	120 V	Incand., 6V, #755	1NC-1NO	Yellow	CR104PBT11E1B2	\$100.20
Transformer	120 V	Incand., 6V, #755	1NC-1NO	Blue	CR104PBT11L1B2	\$100.20
Transformer	120 V	Incand., 6V, #755	1NC-1NO	Amber	CR104PBT11M1B2	\$100.20
Transformer	120 V	Incand., 6V, #755	1NC-1NO	Clear	CR104PBT11C1B2	\$100.20
Transformer	120 V	Incand., 6V, #755	1NC-1NO	White	CR104PBT11W1B2	\$100.20

<sup>4</sup>Supplied with one NO (early closing) and one NC single circuit contact blocks.

Product number and price do not include nameplate. Nameplates must be ordered as separate item from pages 9-40 to

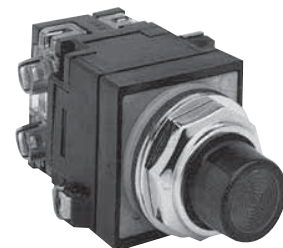
9-41. Resistor-type illuminated push button units are available. Contact your nearest GE Rep.

#### Lens Colors Available\*

Color	Insert in place of asterisk (*)
No Lens Cap	A <sup>5</sup>
Clear <sup>6</sup>	C
Yellow	E
Green	G
Blue	L
Amber	M
Red	R
White	W

<sup>5</sup>Subtract \$4.20.

<sup>6</sup>Not available as LED.



Push-Push, Illuminated Push Button



# Pilot and Signaling Devices

## Heavy-Duty 30.5 mm Watertight/Oiltight Push Buttons

### CR104P

Mushroom-Head  
 Non-Illuminated  
 600 Volts Maximum AC/DC  
 10 Amperes Continuous

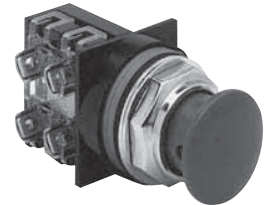
One-step selection and pricing of common assembled forms.

Units are supplied factory-assembled when ordered with contact blocks, except 2 3/8" diameter mushroom-head, which is unattached.

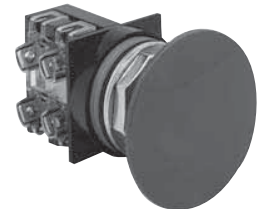
Suitable for use in NEMA Type 1, 3, 3R, 4, 4X, 12, and 13 applications when mounted in enclosures rated for those same applications. For some NEMA Type 4X applications, protective caps will improve corrosion resistance.

#### 1 3/8" Diameter - Momentary Operator

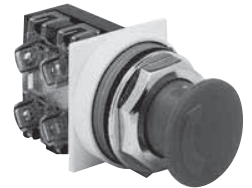
Contact Configuration	Color	Product Number	List Price GO-10P1
None (Operator Only)	Black	CR104PBM00B5	\$34.20
None (Operator Only)	Red	CR104PBM00R5	\$34.20
None (Operator Only)	Other	CR104PBM00*5 <sup>1</sup>	\$28.20
1NO-1NC	Black	CR104PBM91B5	\$52.20
1NO-1NC	Red	CR104PBM91R5	\$52.20
1NO-1NC	Other	CR104PBM91*5 <sup>1</sup>	\$46.20
2NO-2NC	Black	CR104PBM92B5	\$70.20
2NO-2NC	Red	CR104PBM92R5	\$70.20
2NO-2NC	Other	CR104PBM92*5 <sup>1</sup>	\$64.20
1NO	Black	CR104PBM10B5	\$43.20
1NO	Red	CR104PBM10R5	\$43.20
1NO	Other	CR104PBM10*5 <sup>1</sup>	\$37.20
1NC	Black	CR104PBM01B5	\$43.20
1NC	Red	CR104PBM01R5	\$43.20
1NC	Other	CR104PBM01*5 <sup>1</sup>	\$37.20



1 3/8" Mushroom Head



2 3/8" Mushroom Head



Push-to-Latch, Turn-to-Release

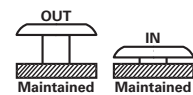
#### 2 3/8" Diameter - Momentary Operator

Contact Configuration	Color	Product Number	List Price GO-10P1
None (Operator Only)	Black	CR104PBM00B6	\$34.20
None (Operator Only)	Red	CR104PBM00R6	\$34.20
None (Operator Only)	Other	CR104PBM00*6 <sup>1</sup>	\$28.20
1NO-1NC	Black	CR104PBM91B6	\$52.20
1NO-1NC	Red	CR104PBM91R6	\$52.20
1NO-1NC	Other	CR104PBM91*6 <sup>1</sup>	\$46.20
2NO-2NC	Black	CR104PBM92B6	\$70.20
2NO-2NC	Red	CR104PBM92R6	\$70.20
2NO-2NC	Other	CR104PBM92*6 <sup>1</sup>	\$64.20
1NO	Black	CR104PBM10B6	\$43.20
1NO	Red	CR104PBM10R6	\$43.20
1NO	Other	CR104PBM10*6 <sup>1</sup>	\$37.20
1NC	Black	CR104PBM01B6	\$43.20
1NC	Red	CR104PBM01R6	\$43.20
1NC	Other	CR104PBM01*6 <sup>1</sup>	\$37.20

#### 1 3/8" Diameter Push-to-latch, turn-to-release

Contact Configuration	Color	Product Number	List Price GO-10P1
None (Operator Only)	Red	CR104PTR20A0R	\$52.20
1NO-1NC	Red	CR104PTR20A0R91	\$70.20
2NO-2NC	Red	CR104PTR20A0R92	\$88.20
1NO	Red	CR104PTR20A0R1	\$61.20
1NC	Red	CR104PTR20A0R01	\$61.20

<sup>1</sup>To order assembled units with a different color, substitute the letter below in place of the \* in product number and add required adder to the list price.



2 Position Maintained

NC X O  
 NO O X

#### Push-Pull Maintained Operator

Contact Configuration	Color	Operation	Product Number	List Price GO-10P1
1NO-1NC	Red	2 Position Maintained	CR104PBM01R5C	\$61.20
1NC-1NC late breaking	Red	3 Position, Momentary Push, Momentary Pull	CR104PBM0LR5D	\$61.20
1NC-1NC late breaking	Red	3 Position, Maintained Push, Momentary Pull	CR104PBM0LR5E	\$61.20



Momentary Push - Momentary Pull

NC X X O  
 NC X O O

#### Cap Colors Available\*

Color	Insert in place of asterisk (*)	List Price Adder, GO-10P1 Mushroom Heads
Yellow	E	\$6.00
Green	G	\$6.00
No Cap	A	\$0.00



Maintained Push - Momentary Pull

NC X X O  
 NC X O O



# Pilot and Signaling Devices

## Heavy-Duty 30.5 mm Watertight/Oiltight Push Buttons

### CR104P

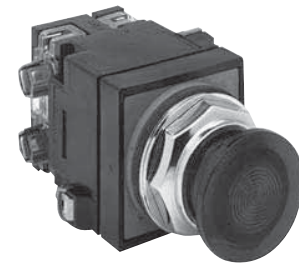
## Section 9

Mushroom-Head  
600 Volts Maximum AC/DC  
10 Amperes Continuous

Suitable for use in NEMA Types 1, 3, 3R, 4, 4X, 12, and 13 applications when mounted in enclosures rated for those same applications.

#### 1 3/8" Diameter Illuminated - Momentary Operator

Power Supply Type	Supply Voltage	Lamp Type <sup>1</sup>	Contact Configuration	Product Number <sup>2</sup>	List Price GO-10P1
Transformer	120V 50/60 Hz	Incand., 6V, #755	1NO-1NC	CR104PBT11*5S2	\$96.20
Transformer	240V 50/60 Hz	Incand., 6V, #755	1NO-1NC	CR104PBT11*5S3	\$96.20
Transformer	480V 50/60 Hz	Incand., 6V, #755	1NO-1NC	CR104PBT11*5S4	\$96.20
Transformer	600V 50/60 Hz	Incand., 6V, #755	1NO-1NC	CR104PBT11*5S5	\$96.20
Full Voltage	6V 50/60 Hz	Incand., 6V, #755	1NO-1NC	CR104PBL11*5S6	\$84.20
Full Voltage	12V 50/60 Hz	Incand., 12V, #756	1NO-1NC	CR104PBL11*5S7	\$84.20
Full Voltage	24V 50/60 Hz	Incand., 24V, #1819	1NO-1NC	CR104PBL11*5S8	\$84.20
Full Voltage	120V 50/60 Hz	Incand., 130V	1NO-1NC	CR104PBL11*5S2	\$84.20
Full Voltage	6 VAC/DC	LED, 6V	1NO-1NC	CR104PBL11*5L6	\$102.20
Full Voltage	12 VAC/DC	LED, 12V	1NO-1NC	CR104PBL11*5L7	\$102.20
Full Voltage	24 VAC/DC	LED, 24V	1NO-1NC	CR104PBL11*5L8	\$102.20
Full Voltage	120 VAC/DC	LED, 120V	1NO-1NC	CR104PBL11*5L2	\$102.20



Illuminated Mushroom-Head  
Push Button

#### 1 5/8" Diameter Illuminated - Momentary Operator

Power Supply Type	Supply Voltage	Lamp Type <sup>1</sup>	Contact Configuration	Product Number <sup>2, 3</sup>	List Price GO-10P1
Transformer	120V 50/60 Hz	Incand., 6V, #755	1NO-1NC	CR104PBT11*7S2	\$96.20
Transformer	240V 50/60 Hz	Incand., 6V, #755	1NO-1NC	CR104PBT11*7S3	\$96.20
Transformer	480V 50/60 Hz	Incand., 6V, #755	1NO-1NC	CR104PBT11*7S4	\$96.20
Transformer	600V 50/60 Hz	Incand., 6V, #755	1NO-1NC	CR104PBT11*7S5	\$96.20
Full Voltage	6V 50/60 Hz	Incand., 6V, #755	1NO-1NC	CR104PBL11*7S6	\$84.20
Full Voltage	12V 50/60 Hz	Incand., 12V, #756	1NO-1NC	CR104PBL11*7S7	\$84.20
Full Voltage	24V 50/60 Hz	Incand., 24V, #1819	1NO-1NC	CR104PBL11*7S8	\$84.20
Full Voltage	120V 50/60 Hz	Incand., 130V	1NO-1NC	CR104PBL11*7S2	\$84.20
Full Voltage	6 VAC/DC	LED, 6V	1NO-1NC	CR104PBL11*7L6	\$102.20
Full Voltage	12 VAC/DC	LED, 12V	1NO-1NC	CR104PBL11*7L7	\$102.20
Full Voltage	24 VAC/DC	LED, 24V	1NO-1NC	CR104PBL11*7L8	\$102.20
Full Voltage	120 VAC/DC	LED, 120V	1NO-1NC	CR104PBL11*7L2	\$102.20

<sup>1</sup>All lamps miniature bayonet bases.

<sup>2</sup>Replace asterisk (\*) in product number with letter from chart below.

<sup>3</sup>1 5/8" mushroom-head push buttons are special order—nonstock.

#### Lens Colors Available\*

Color	Insert in place of asterisk (*)
No Lens Cap	A <sup>4</sup>
Clear <sup>5</sup>	C
Yellow	E
Green	G
Blue	L
Amber	M
Red	R
White	W

<sup>4</sup>Subtract \$4.20.

<sup>5</sup>Not available as LED.



# Pilot and Signaling Devices

## Heavy-Duty 30.5 mm Watertight/Oiltight Push Buttons

### CR104P

Key Operated  
 600 Volts Maximum AC/DC  
 10 Amperes Continuous

Product Number and price do not include nameplate. All nameplates must be ordered as a separate item. Four single-circuit or four double-circuit contact blocks are maximum number that can be assembled to cylinder lock operators.

Suitable for use in NEMA Type 1, 3, 3R, 4, 4X, 12, and 13 applications, when mounted in enclosures rated for those same applications. For some NEMA Type 4X applications, protective caps will provide improved corrosion resistance.

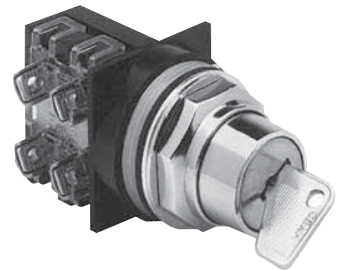
#### Operator Alone

Position Type	Release Type	Product Number	List Price GO-10P1
Lock in Depressed and Free Positions	-	CR104PBK00A1J	\$52.20
Lock Only in Free Position	-	CR104PBK00A1K	\$52.20
Lock Only in Depressed Position	-	CR104PBK00A1L	\$52.20
-	Push-To-Latch, Key Operate To Reset	CR104PBK00A1M	\$52.20

Select contact blocks from page 9-34.

#### Assembled Operator

Position Type	Release Type	Contact Configuration	Product Number	List Price GO-10P1
Lock in Depressed and Free Positions	-	1NO-1NC	CR104PBK91A1J	\$70.20
Lock Only in Free Position	-	1NO-1NC	CR104PBK91A1K	\$70.20
Lock Only in Depressed Position	-	1NO-1NC	CR104PBK91A1L	\$70.20
-	Push-To-Latch, Key Operate To Reset	1NO-1NC	CR104PBK91A1M	\$70.20



Key Operated Push Button



# Pilot and Signaling Devices

## Heavy-Duty 30.5 mm Watertight/Oiltight Push Buttons

### CR104P

## Section 9

Special Function  
 Non-Illuminated  
 600 Volts Maximum AC/DC  
 10 Amperes Continuous

Product Number and price do not include nameplate. All nameplates must be ordered as a separate item. Four single-circuit or four double-circuit contact blocks are maximum number that can be assembled to cylinder lock operators.

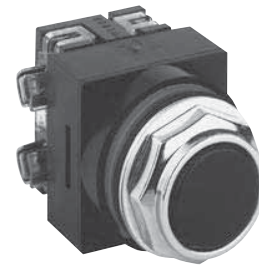
Suitable for use in NEMA Type 1, 3, 3R, 4, 4X, 12, and 13 applications, when mounted in enclosures rated for those same applications. For some NEMA Type 4X applications, protective caps will provide improved corrosion resistance.

#### Push-Push

The push-push operated units are 2-position, maintained contact push buttons. They are assembled, ready for installation, except for the required nameplate which must be ordered as a separate item. Two single-circuit contact blocks are the maximum number that can be installed on the operator. All normally open contacts must be the early closing type.

Contact Configuration <sup>1</sup>	Color	Product Number	List Price GO-10P1
1NC-1NO	Black	CR104PBG11B1B	\$52.20
1NC-1NO	Red	CR104PBG11R1B	\$52.20
1NC-1NO	Green	CR104PBG11G1B	\$52.20
1NC-1NO	Yellow	CR104PBG11E1B	\$52.20
1NC-1NO	Blue	CR104PBG11L1B	\$52.20
1NC-1NO	Orange	CR104PBG11M1B	\$52.20
1NC-1NO	Brown	CR104PBG11N1B	\$52.20
1NC-1NO	White	CR104PBG11W1B	\$52.20

<sup>1</sup>Supplied with one NO (early make) and one NC single-circuit contact block.



Push-Push, Non-Illuminated  
 Push Button

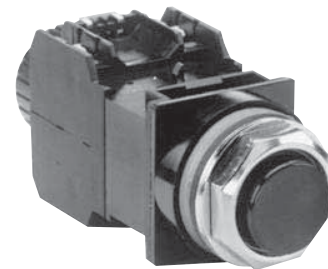
Left      Right



Contact Configuration

#### Time-Delay (Adjustable 0.5-30 Seconds)

Contact Configuration	Color	Product Number	List Price GO-10P1
1NO-1NC	Black	CR104PBG99B1	\$106.20
1NO-1NC	Red	CR104PBG99R1	\$106.20
1NO-1NC	Green	CR104PBG99G1	\$106.20
1NO-1NC	No Cap	CR104PBG99A1	\$105.90
1NO-1NC	Yellow	CR104PBG99E1	\$106.20
1NO-1NC	Blue	CR104PBG99L1	\$106.20
1NO-1NC	Orange	CR104PBG99M1	\$106.20
1NO-1NC	Brown	CR104PBG99N1	\$106.20
1NO-1NC	White	CR104PBG99W1	\$106.20



Time-Delay Push Button



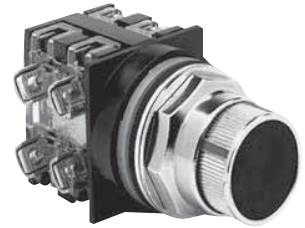
# Pilot and Signaling Devices

## Heavy-Duty 30.5 mm Watertight/Oiltight Push Buttons

### CR104P

## Section 9

Special Function  
 Non-Illuminated  
 Push-Turn  
 600 Volts Maximum AC/DC  
 10 Amperes Continuous



Push-Turn Unit

Suitable for use in NEMA Types 1, 12, and 13 applications when mounted in enclosures rated for those same applications. For some NEMA Type 4X applications, protective caps will improve corrosion resistance.

### 2-Position

Contact State		Product Number <sup>1</sup>	List Price GO-10P1
Push Position	Turn Position		
Free		CR104PTP26E0*92	\$70.20
Depressed			
Free		CR104PTP26D0*92	\$70.20
Depressed			
Free		CR104PTP21B0*91	\$52.20
Depressed			
Free		CR104PTP22B0*91	\$52.20
Depressed			
Free		CR104PTP22B0*92	\$70.20
Depressed			
Free		CR104PTP22D0*92	\$70.20
Depressed			
Free		CR104PTP21C0*92	\$70.20
Depressed			
Free		CR104PTP23C0*92	\$70.20
Depressed			
Free		CR104PTP23B0*92	\$70.20
Depressed			
Free		CR104PTP24C0*92	\$70.20
Depressed			
Free		CR104PTP24E3*92	\$70.20
Depressed			
Free		CR104PTP25B3*92	\$70.20
Depressed			

### 3-Position

Contact State		Product Number <sup>1</sup>	List Price GO-10P1
Push Position	Turn Position		
Free		CR104PTP31E0*92	\$70.20
Depressed			
Free		CR104PTP31E2*92	\$70.20
Depressed			
Free		CR104PTP34E6*91	\$52.20
Depressed			
Free		CR104PTP32F2*92	\$70.20
Depressed			
Free		CR104PTP33G2*92	\$70.20
Depressed			

<sup>1</sup>Replace asterisk (\*) in product number with letter from chart below.

### Cap Colors Available\*

Color	Insert in place of asterisk (*)
Black	B
Red	R
Green	G
Yellow	E

